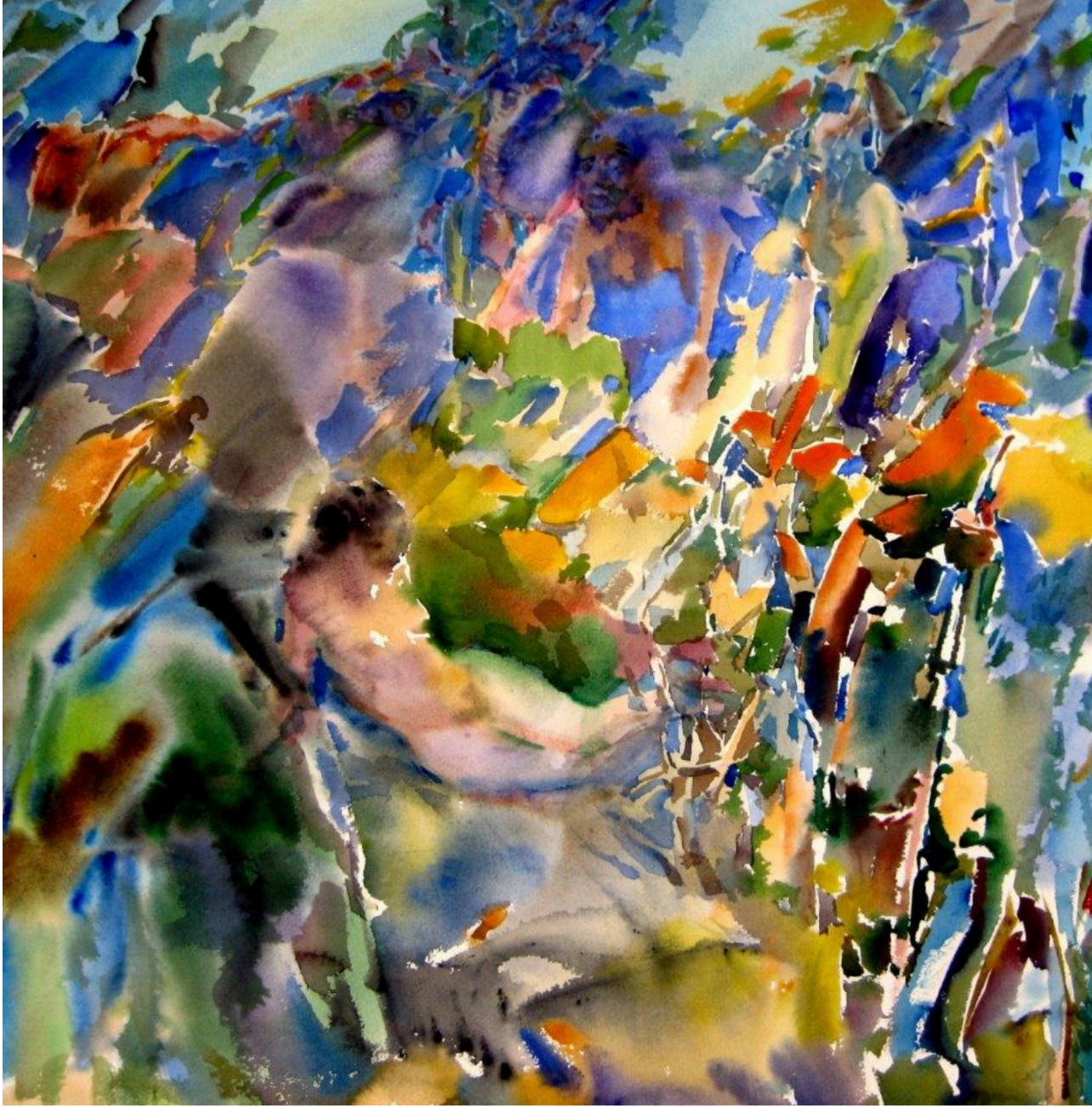


SDSU Jewish Studies Program presents

**THURSDAY, MARCH 26, 7PM - SMITH RECITAL HALL**



## PERFORMERS

Gunnar Biggs, contrabass  
Fred Benedetti, guitar  
Jamie Papish, percussion  
Elizabeth Schwartz, vocals  
Yale Strom, violin

## SPECIAL GUEST

Luay Yousif  
vocals & violin

The music is based upon an interpretation of the poem **SONG OF SONGS** written by King Solomon. The quartet moves from classical to Middle Eastern motifs back to classical with the lyrics sung in Hebrew and in English. The poem will also be interpreted by movement, with six San Diego Ballet dancers under the choreography of artistic director Javier Velasco giving a sublime interpretation of this “love” poem.

After the ballet, the Iraqi Chaldean Luay Yousif, singer, violinist and his band will present Iraqi folk music, and will then be joined by the performers.

Free and open to the public | Information: [jewishstudies@sdsu.edu](mailto:jewishstudies@sdsu.edu)

SACRED MUSIC, SACRED WORDS



THURSDAY, MARCH 26, 7PM - SMITH RECITAL HALL

# SACRED MUSIC, SACRED WORDS



Luay Yousif



Elizabeth Schwartz, Gunnar Biggs, Yale Strom



Jamie Papish



Fred Benedetti

## Directions to Smith Recital Hall San Diego State University

### For Parking in Structure P12 (Recommended)

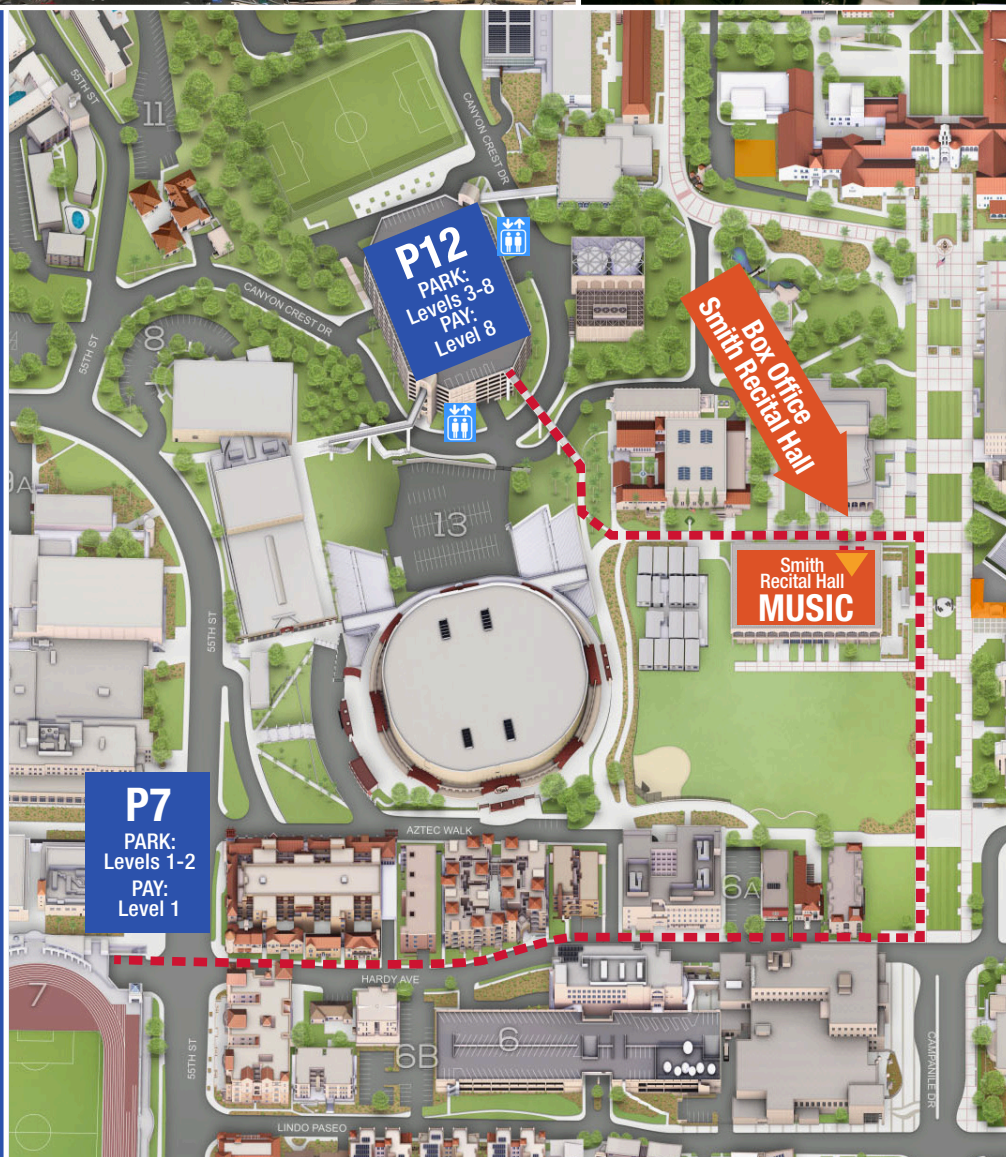
From College Ave. turn right at the first traffic light south of the I-8 onto Canyon Crest Drive. Turn right at the next stop sign and proceed to Parking Structure P12. You may park in any student parking spot in P12 (levels 3-8.) Take the elevator to the eighth floor to purchase a parking permit from the yellow box located next to the elevators and place on your windshield. Cross the pedestrian bridge, following signs to Performing Arts Plaza. The Music Building (Smith Recital Hall) will be on your right.

### For Parking in Structure P7

From I-8 take College Ave. South. Turn right onto Montezuma Road. Turn right onto 55th Street and the parking structure will be on your left. Parking permits are available on the first floor next to the entrance. Place the permit on your windshield.



SAN DIEGO STATE  
UNIVERSITY



For full campus map visit: [www.sdsu.edu/map](http://www.sdsu.edu/map)